



**BUILDING CODE COMPLIANCE OFFICE (BCCO)
PRODUCT CONTROL DIVISION**

**MIAMI-DADE COUNTY, FLORIDA
METRO-DADE FLAGLER BUILDING
140 WEST FLAGLER STREET, SUITE 1603
MIAMI, FLORIDA 33130-1563
(305) 375-2901 FAX (305) 375-2908**

NOTICE OF ACCEPTANCE (NOA)

**Hendee Enterprises, Inc.
9350 South Point Drive
Houston, TX 77054**

SCOPE:

This NOA is being issued under the applicable rules and regulations governing the use of construction materials. The documentation submitted has been reviewed by Miami-Dade County Product Control Division and accepted by the Board of Rules and Appeals (BORA) to be used in Miami Dade County and other areas where allowed by the Authority Having Jurisdiction (AHJ).

This NOA shall not be valid after the expiration date stated below. The Miami-Dade County Product Control Division (In Miami Dade County) and/or the AHJ (in areas other than Miami Dade County) reserve the right to have this product or material tested for quality assurance purposes. If this product or material fails to perform in the accepted manner, the manufacturer will incur the expense of such testing and the AHJ may immediately revoke, modify, or suspend the use of such product or material within their jurisdiction. BORA reserves the right to revoke this acceptance, if it is determined by Miami-Dade County Product Control Division that this product or material fails to meet the requirements of the applicable building code.

This product is approved as described herein, and has been designed to comply with the High Velocity Hurricane Zone of the Florida Building Code.

DESCRIPTION: "Force 12" Impact Resistant Screen Membrane Structure System

APPROVAL DOCUMENT: Drawing No. F1201, titled "Force 12 panel mounting cross sections", sheets 1 thru 9 of 9, dated May 3, 2000, last revision dated 07/19/2001, sheets 1 to 4, and 06/26/2001, sheets 5 to 9, all prepared, signed & sealed by Robert R. Bullard, P.E., bearing the Miami-Dade County Product Control Renewal stamp with the Notice of Acceptance number and expiration date by the Miami-Dade County Product Control Division.

MISSILE IMPACT RATING: Large and Small Missile Impact

LABELING: Each unit shall bear a permanent label with the manufacturer's name or logo, city, state and the following statement: "Miami-Dade County Product Control Approved", unless otherwise noted herein.

RENEWAL of this NOA shall be considered after a renewal application has been filed and there has been no change in the applicable building code negatively affecting the performance of this product.

TERMINATION of this NOA will occur after the expiration date or if there has been a revision or change in the materials, use, and/or manufacture of the product or process. Misuse of this NOA as an endorsement of any product, for sales, advertising or any other purposes shall automatically terminate this NOA. Failure to comply with any section of this NOA shall be cause for termination and removal of NOA.

ADVERTISEMENT: The NOA number preceded by the words Miami-Dade County, Florida, and followed by the expiration date may be displayed in advertising literature. If any portion of the NOA is displayed, then it shall be done in its entirety.

INSPECTION: A copy of this entire NOA shall be provided to the user by the manufacturer or its distributors and shall be available for inspection at the job site at the request of the Building Official.

This NOA **renews NOA # 02-0419.02** and consists of this page 1, evidence submitted page(s) as well as approval document mentioned above.

The submitted documentation was reviewed by **Helmy A. Makar, P.E.**



Helmy A. Makar
05/27/2004

**NOA No 04-0413.04
Expiration Date: 08/29/2009
Approval Date: 05/27/2004
Page 1**

Hendee Enterprises, Inc.

NOTICE OF ACCEPTANCE: EVIDENCE SUBMITTED

1. EVIDENCE SUBMITTED UNDER PREVIOUS APPROVAL #00-0929.12

A. DRAWINGS

1. *Drawing No. F1201, titled "Force 12", prepared by Absolute Engineering Group CA-7895, dated May 3, 2000, last revision #5 dated July 19, 2001, sheets 1 through 9 of 9, signed and sealed by Robert R. Bullard, P.E.*

B. TESTS

1. *Test report on Large Missile Impact Test, Cyclic Wind Pressure Test, and Static Wind Pressure Test of Hendee Enterprises Force 12 Protective Screen System, prepared by National Certified Testing Laboratories, Report No. NCTL 210-2310-1, 2, 3, dated May 2, 2001, signed and sealed by Barry Portnoy, P.E.*
2. *Addendum #1 to Test Report No. NCTL 210-2310-1, 2, 3, dated March 2, 2001, signed and sealed by Barry Portnoy, P.E.*
3. *Addendum #2 to Test Report No. NCTL 210-2310-1, 2, 3, dated May 2, 2001, signed and sealed by Barry Portnoy, P.E.*

C. CALCULATIONS

1. *Calculations, dated June 7, 2001, page 1 of 1, prepared by Robert R. Bullard, P.E., signed and sealed by Robert R. Bullard, P.E.*

D. MATERIAL CERTIFICATIONS

1. *Mill certified Inspection Report with screen's physical properties.*

2. EVIDENCE SUBMITTED UNDER PREVIOUS APPROVAL #02-0419.02

A. DRAWINGS

See NOA 00-0929.12

B. TESTS

See NOA 00-0929.12

C. CALCULATIONS

See NOA 00-0929.12

D. MATERIAL CERTIFICATIONS

See NOA 00-0929.12

E. STATEMENTS

See NOA 00-0929.12



Helmy A. Makar, P.E.

Product Control Examiner

NOA No 04-0413.04

Expiration Date: 08/29/2009

Approval Date: 05/27/2004

Hendee Enterprises, Inc.

NOTICE OF ACCEPTANCE: EVIDENCE SUBMITTED

F. OTHER

NOA 00-0929.12

3. NEW EVIDENCE SUBMITTED

A. DRAWINGS

1. *Drawing No. F1201, titled "Force 12 panel mounting cross sections", sheets 1 thru 9 of 9, dated May 3, 2000, last revision dated 07/19/2001, sheets 1 to 4, and 06/26/2001, sheets 5 to 9, all prepared, signed & sealed by Robert R. Bullard, P.E.*

B. TESTS

1. *None.*

C. CALCULATIONS


1. *None.*

D. QUALITY ASSURANCE

1. *By Miami-Dade County Building Code Compliance Office.*

E. MATERIAL CERTIFICATIONS

1. *None.*



Helmy A. Makar, P.E.
Product Control Examiner
NOA No 04-0413.04
Expiration Date: 08/29/2009
Approval Date: 05/27/2004

FORCE 12 PROTECTION

FLEXIBLE WIND ABATEMENT SCREEN SYSTEM

GENERAL NOTES

1. THIS PRODUCT IS DESIGNED TO MEET THE SOUTH FLORIDA BUILDING CODE 1994 EDITION FOR MIAMI-DADE COUNTY.
2. WOOD FRAMING MEMBERS BY OTHERS, MUST BE ANCHORED PROPERLY TO TRANSFER LOADS TO THE STRUCTURE. WOOD FRAMING MEMBERS SHALL BE "SOUTHERN PINE" WITH G=0.55 OR GREATER DENSITY.
3. PRODUCT ANCHORS SHALL BE AS LISTED AND SPACED AS SHOWN ON DETAILS. ANCHOR EMBEDMENT TO BASE MATERIAL SHALL BE BEYOND WALL DRESSING OR STUCCO.
4. DESIGN PRESSURE RATING: SEE CHART BELOW.
5. THE DETAILS AND SPECIFICATIONS SHOWN HEREIN REPRESENT THE PRODUCT TESTED FOR IMPACT, CYCLIC, AND UNIFORM STATIC AIR PRESSURE TESTING ⑤
- ④ IN CONFORMANCE WITH MIAMI-DADE COUNTY PROTOCOLS PA-201, 203 & 202. REFERENCE NATIONAL CERTIFIED TESTING LABORATORIES REPORT NCTL 210-2310-1,2,3

HURRICANE SCREEN CONSTRUCTION (COMMON TO ALL CONDITIONS)

SCREEN & SCREEN TRACK CONSTRUCTION:

SCREEN:

THE SCREEN IS MANUFACTURED FROM A WOVEN POLYPROPYLENE MONOFILAMENT GEOTEXTILE FABRIC WITH INDIVIDUAL FILAMENTS WOVEN INTO A BASKET WEAVE NETWORK AND CALENDERED SUCH THAT THE FILAMENTS RETAIN DIMENSIONAL STABILITY RELATIVE TO EACH OTHER.

④

SCREEN CONFIGURATION: SEE SHTS. 4 & 5 OF 9

THE SCREEN IS MANUFACTURED IN (3) STYLES, VERTICAL SEAM, HORIZONTAL SEAM & NON-SEAMED OVERLAPPED FABRIC PANELS. THE MAXIMUM PANEL HEIGHT IS 12'-0".

SCREEN TRACK:

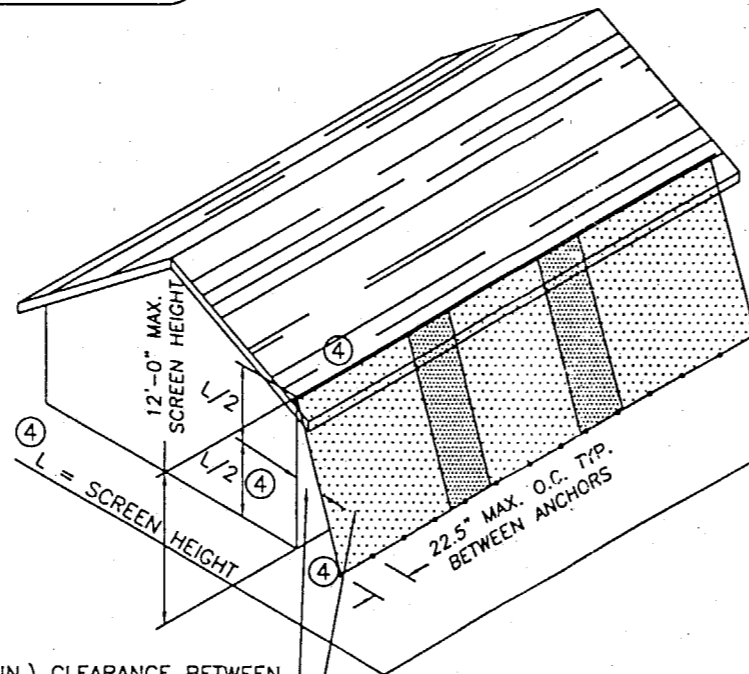
THE SCREEN TRACK IS EXTRUDED FROM 6063-T6 ALUMINUM.

DESIGN PRESSURE RATING

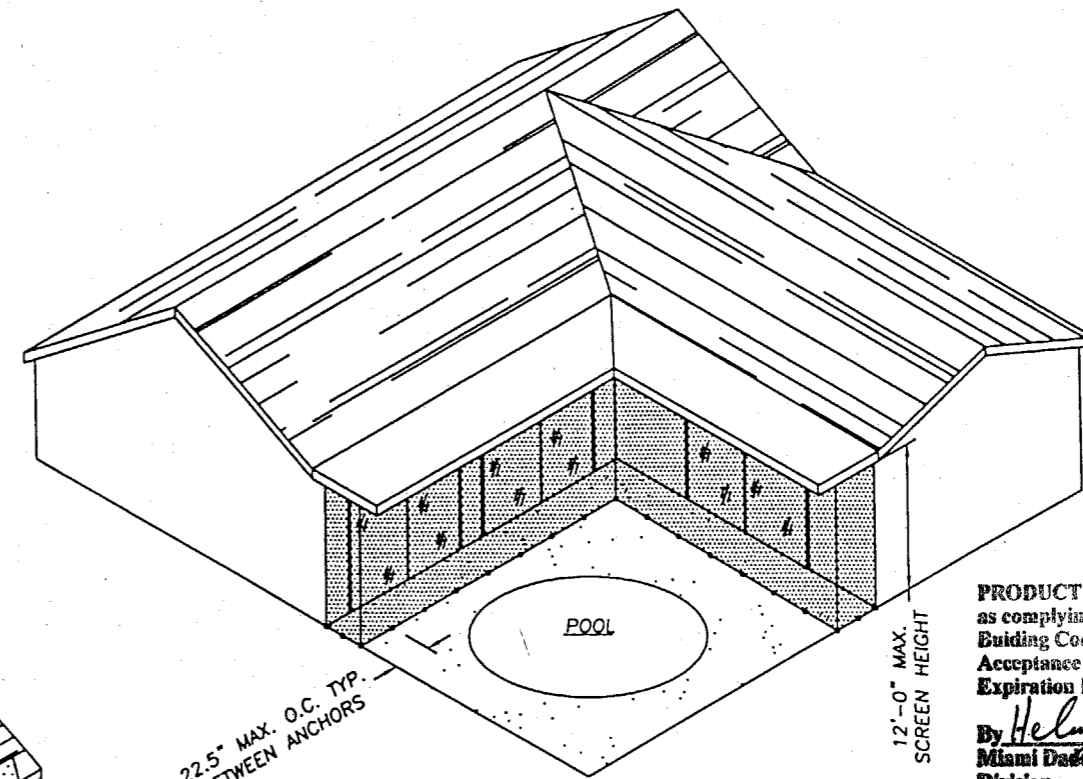
POSITIVE	④	+ 60.0 psf
NEGATIVE	④	- 60.0 psf

SCREEN TO GLASS SEPARATION 12 2'-5" (MIN.) AT MID-SPAN OF SCREEN.

ROBERT R. BULLARD, P.E. 18544
ABSOLUTE ENGINEERING GROUP CA-7895
140 SOUTH BEACH ST. #400
DAYTONA BEACH, FL 32114
PHONE: 386-254-2909
FAX: 386-255-9419



④ 2'-5" (MIN.) CLEARANCE BETWEEN SCREEN AND PROTECTED OPENING GLAZING AT MID-HEIGHT OF FABRIC SCREEN.
SCREEN SHALL BE EXTENDED 2'-0" (MIN.) AT EACH SIDE OF THE OPENING IT PROTECTS OR PROVIDE SIDE CLOSURE SCREEN AT EACH SIDE OF THE OPENING.



ELEVATION #1
APPLICATION ON A LANAI
LANAI SCREEN REMOVED FOR CLARITY
SEE SECTION 1/3 SHT. 3

ELEVATION #2
APPLICATION COVERING
A HOUSE OR SHOP FRONT
SEE SECTIONS 3/2 & 4/2 SHT. 2

PRODUCT REVISED
as complying with the Florida
Building Code
Acceptance No. 02-0919.02
Expiration Date August 29, 2004
By *[Signature]*
Miami Dade Product Control
Division

APPROVED AS COMPLYING WITH THE
SOUTH FLORIDA BUILDING CODE
DATE 08/29/2001
BY *[Signature]*
PRODUCT CONTROL DIVISION
BUILDING CODE COMPLIANCE OFFICE
ACCEPTANCE NO. 00-0929.12

PRODUCT RENEWED
as complying with the Florida
Building Code
Acceptance No. 04-0413.04
Expiration Date 08/29/2009
By *[Signature]*
Miami Dade Product Control
Division

[Handwritten Signature]
07/19/01

REVISIONS

BY:	LTR.	DATE	DESCRIPTION
LS	0	5/8/01	ISSUED FOR CITY PERMIT
RB	1	6/11/01	REVISED PER NOTES
RRB	④	6/26/01	REVISED PER NOTES
RRB	⑤	7/19/01	EDIT TEXT



Hendee Enterprises, Inc.
The Innovative Solutions Company

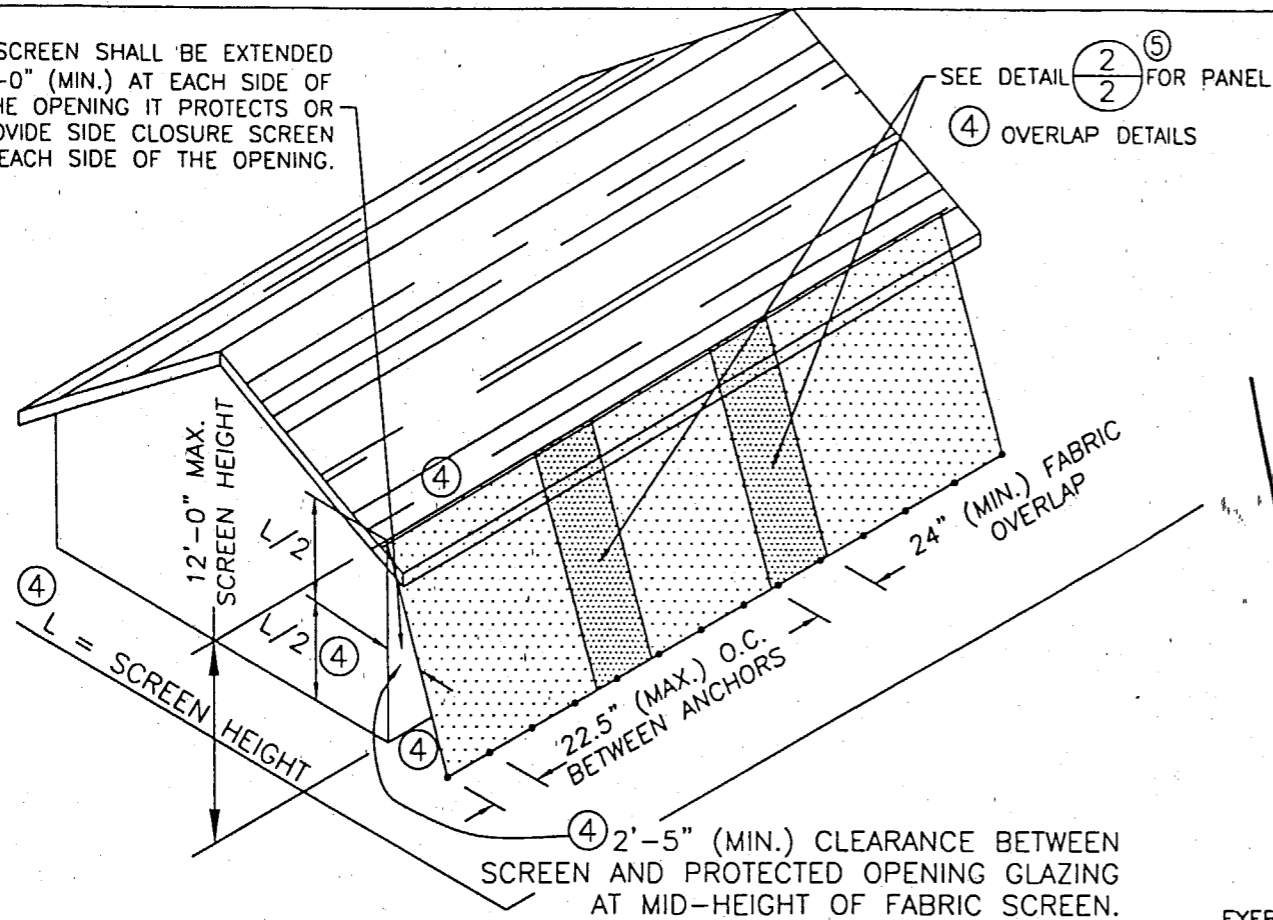
P.O. Box 4289, Houston, TX 77210-4289 9350 South Point Dr., Houston, TX 77054
(713) 796-2322 Fax (713) 796-0494 (800) 231-7275 (Not'l) (800) 323-3641 (Texas)

TITLE: FORCE 12
PANEL MOUNTING CROSS SECTIONS

CLIENT: VARIES
LOCATION: VARIES

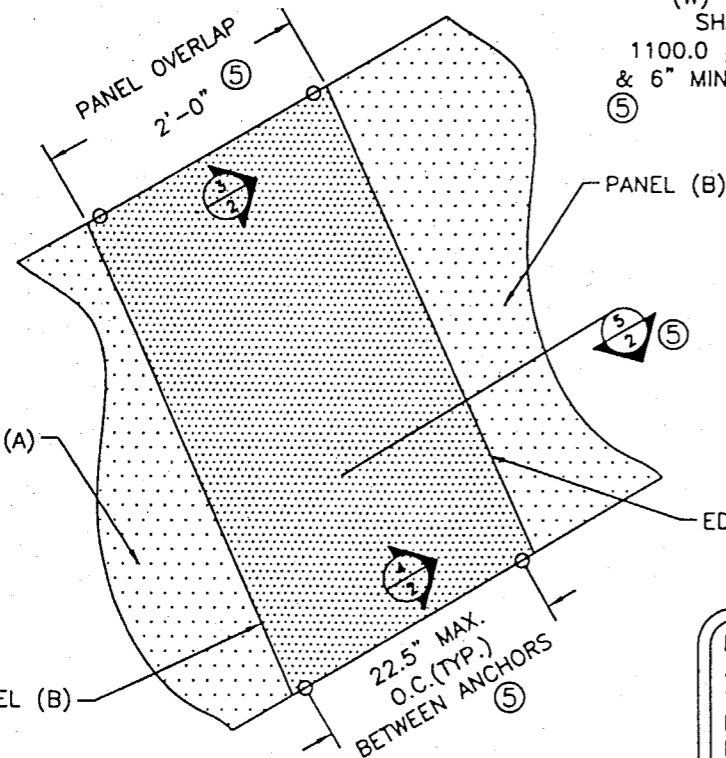
DRAWN BY: RB SCALE: NTS SHEET 1 OF 9
DATE: 05/03/00 DOCUMENT NO: F1201_1 REV: 5

SCREEN SHALL BE EXTENDED 2'-0" (MIN.) AT EACH SIDE OF THE OPENING IT PROTECTS OR PROVIDE SIDE CLOSURE SCREEN AT EACH SIDE OF THE OPENING.



1 PANEL OVERLAP - IN APPLICATION
2 SCALE: NTS = 1'-0"

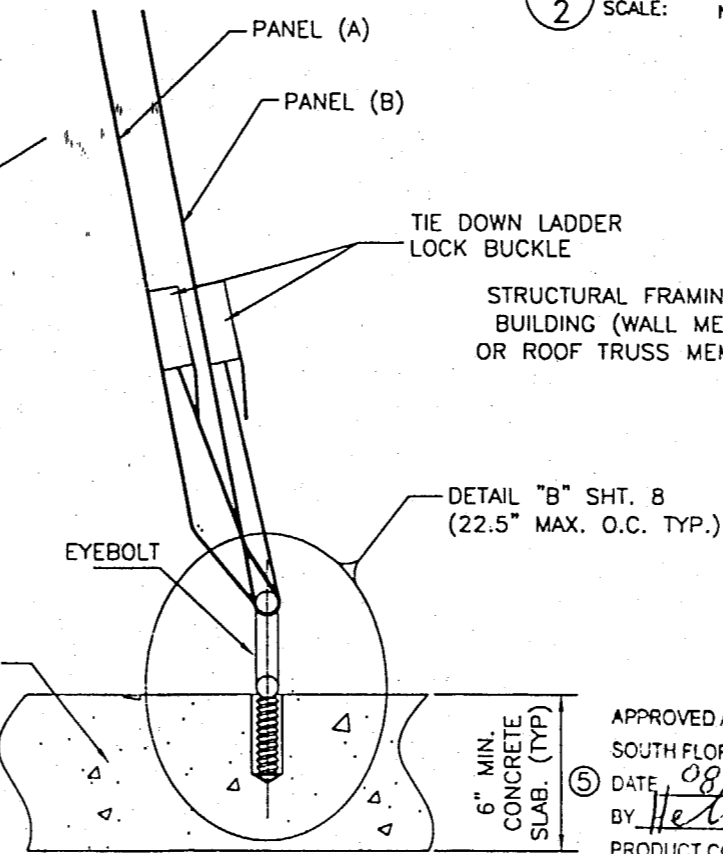
3000 PSI (MIN.) CONCRETE SLAB (W) WIDTH OF THE CONCRETE SLAB SHALL BE DETERMINED BASED ON 1100.0 #/L. FT. OF CONCRETE WEIGHT & 6" MIN. STRUCTURAL CONCRETE SLAB



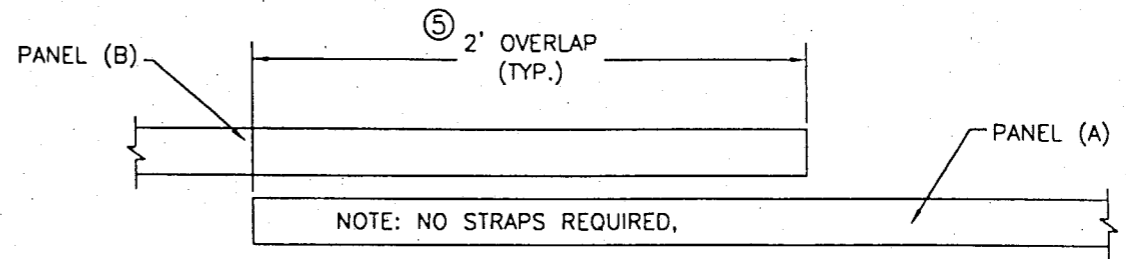
2 PANEL OVERLAP - SECTION
2 SCALE: NTS = 1'-0"

ROBERT R. BULLARD, P.E. 18544
ABSOLUTE ENGINEERING GROUP CA-7895
140 SOUTH BEACH ST. #400
DAYTONA BEACH, FL 32114
PHONE: 386-254-2909
FAX: 386-255-9419

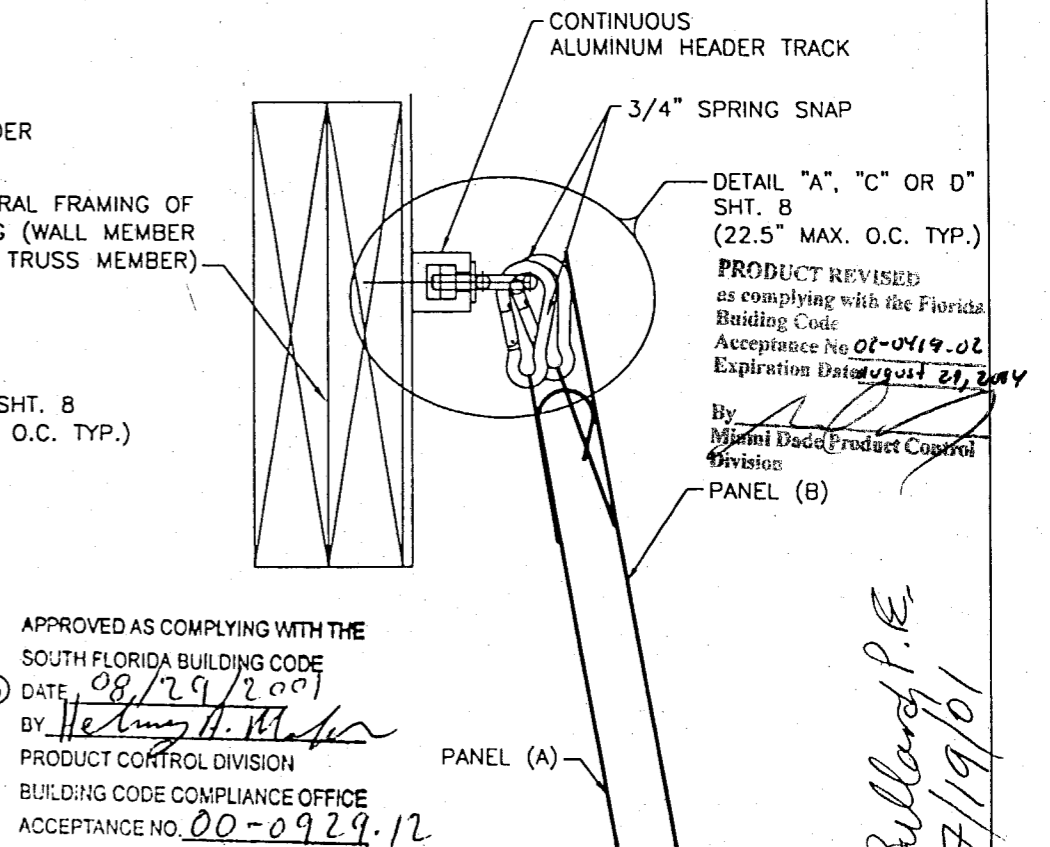
4 PANEL ATTACHMENT - AT BASE
2 SCALE: NTS = 1'-0"



PRODUCT RENEWED as complying with the Florida Building Code
Acceptance No. 04-0413.04
Expiration Date 08/29/2004
By *Helmut H. Mader*
Miami Dade Product Control Division



5 PANEL OVERLAP - SECTION
2 SCALE: NTS = 1'-0"



3 PANEL ATTACHMENT - AT TOP
2 SCALE: NTS = 1'-0"

APPROVED AS COMPLYING WITH THE SOUTH FLORIDA BUILDING CODE
DATE 08/29/2001
BY *Helmut H. Mader*
PRODUCT CONTROL DIVISION
BUILDING CODE COMPLIANCE OFFICE
ACCEPTANCE NO. 00-0929.12

DETAIL "A", "C" OR "D" SHT. 8 (22.5" MAX. O.C. TYP.)
PRODUCT REVISED as complying with the Florida Building Code
Acceptance No. 02-0419.02
Expiration Date August 21, 2004
By *Robert R. Bullard*
Miami Dade Product Control Division

Robert R. Bullard, P.E.
07/19/01

REVISIONS			
BY:	LTR.	DATE	DESCRIPTION
RB	0	3.14.01	ADDITIONAL PERMIT DRAWINGS
LS	1	4.24.01	REV. PER CITY REQUIREMENTS
RB	2	6.11.01	REVISED PER NOTES
RRB	4	6/26/01	REVISED PER NOTES
RRB	5	7/19/01	ENLARGE/EDIT TEXT

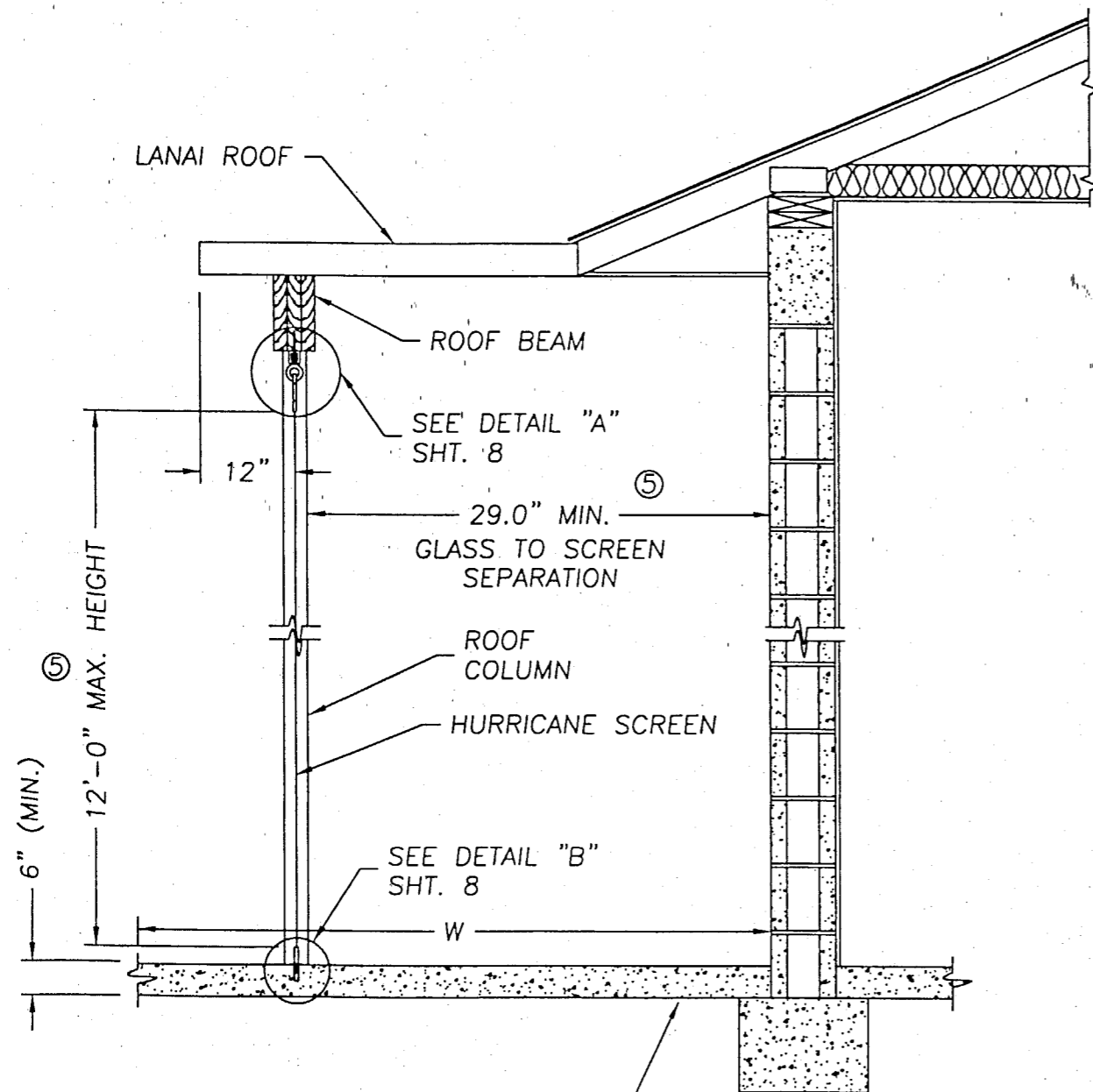
HE Hendee Enterprises, Inc.
The Innovative Solutions Company

P.O. Box 4289, Houston, TX 77210-4289 9350 South Point Dr., Houston, TX 77054
(713) 796-2322 Fax (713) 796-0494 (800) 231-7275 (Not'l) (800) 323-3641 (Texas)

TITLE: FORCE 12
PANEL MOUNTING CROSS SECTIONS

CLIENT: VARIES
LOCATION: VARIES

DRAWN BY: RB SCALE: NTS SHEET 2 OF 9
DATE: 05/03/00 DOCUMENT NO: F1201_2 REV: 5



3000 PSI (MIN.) CONCRETE SLAB.
 (W) WIDTH OF THE CONCRETE SLAB
 SHALL BE DETERMINED BASED ON
 1100.0 #/L. FT. OF CONCRETE WEIGHT

- ① VERTICAL CROSS SECTION AT LANAI
- ③ WOOD TO CONCRETE VERTICAL MOUNTING

PRODUCT RENEWED
 as complying with the Florida
 Building Code
 Acceptance No 04-0413.04
 Expiration Date 08/29/2009
 By Helmy A. Matar
 Miami Dade Product Control
 Division

PRODUCT REVISED
 as complying with the Florida
 Building Code
 Acceptance No 02-0419.02
 Expiration Date August 29, 2004
 By Helmy A. Matar
 Miami Dade Product Control
 Division

APPROVED AS COMPLYING WITH THE
 SOUTH FLORIDA BUILDING CODE
 DATE 08/29/2001
 BY Helmy A. Matar
 PRODUCT CONTROL DIVISION
 BUILDING CODE COMPLIANCE OFFICE
 ACCEPTANCE NO. 00-0929.12

ROBERT R. BULLARD, P.E. 18544
 ABSOLUTE ENGINEERING GROUP CA-7895
 140 SOUTH BEACH ST. #400
 DAYTONA BEACH, FL 32114
 PHONE: 386-254-2909
 FAX: 386-255-9419

RB Bullard, P.E.
07/19/01

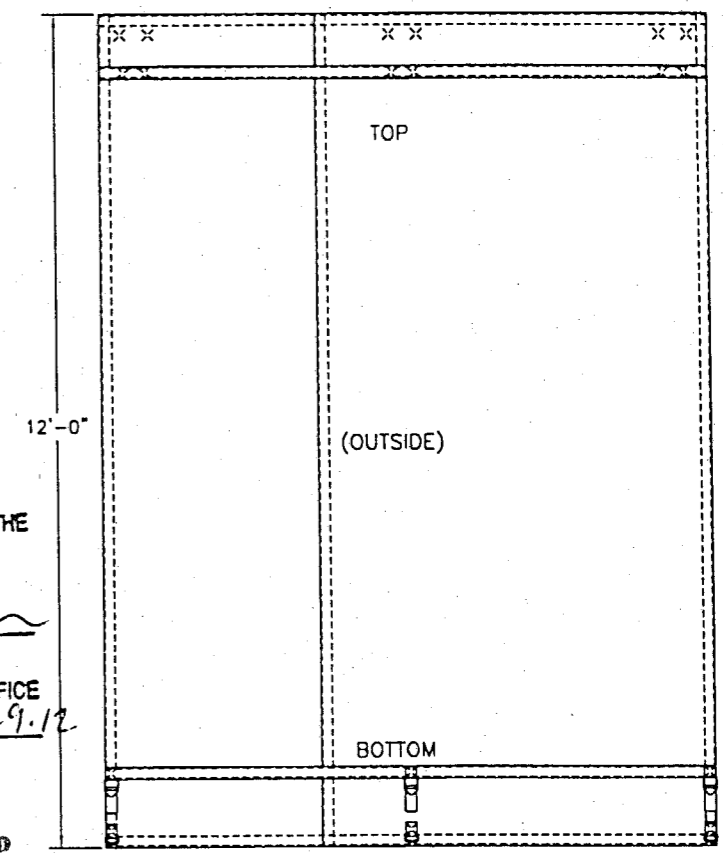
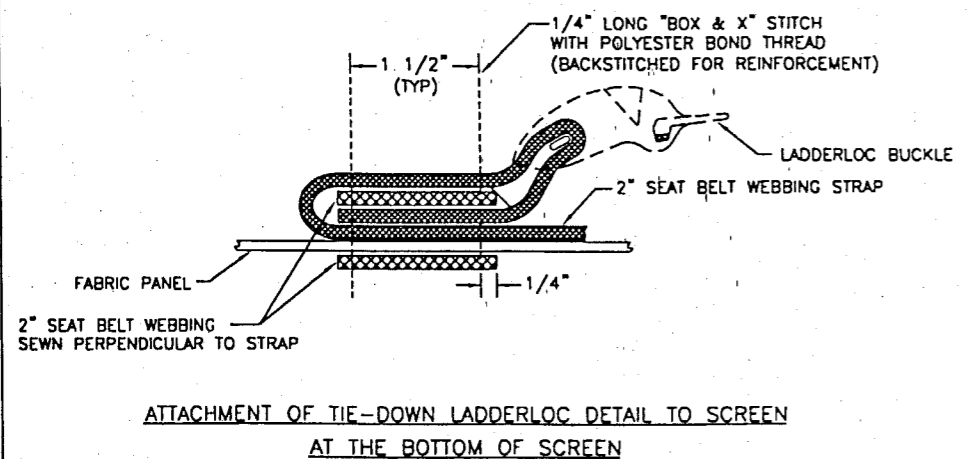
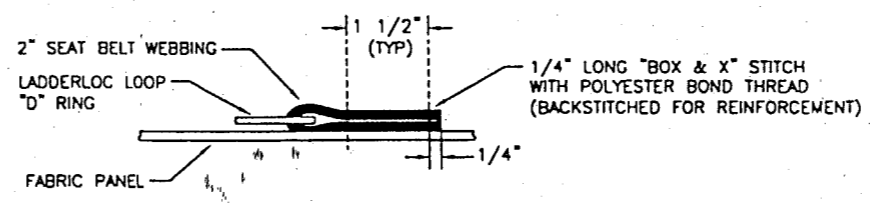
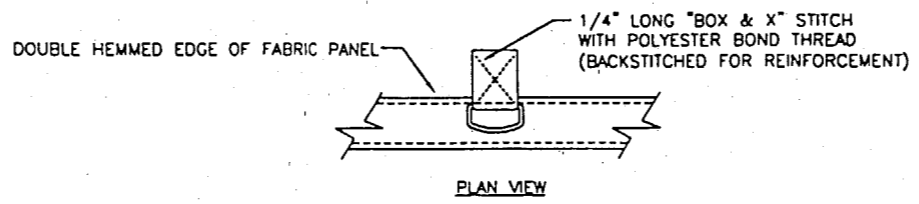
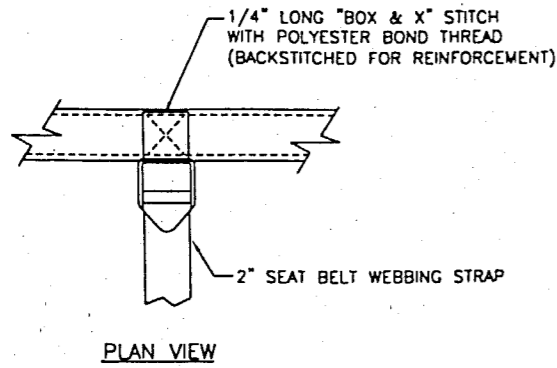
REVISIONS			
BY:	LTR.	DATE	DESCRIPTION
RB	1	6.11.01	REVISED PER NOTES
RRB	④	6.26.01	REMOVE NCTL NOTE
RRB	⑤	7.19.01	ENLARGE/EDIT TEXT

HE Hendee Enterprises, Inc.
 The Innovative Solutions Company
 P.O. Box 4289, Houston, TX 77210-4289 9350 South Point Dr., Houston, TX 77054
 (713) 796-2322 Fax (713) 796-0494 (800) 231-7275 (Not'l) (800) 323-3641 (Texas)

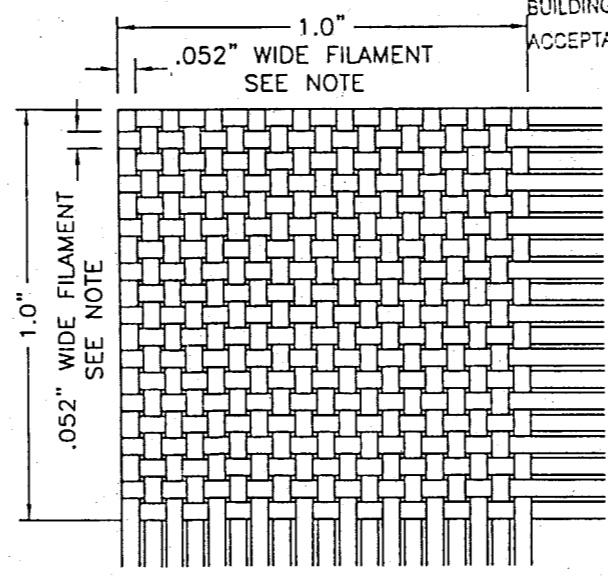
TITLE: FORCE 12
 PANEL MOUNTING CROSS SECTIONS

CLIENT: VARIES
 LOCATION: VARIES

DRAWN BY: RB SCALE: NTS SHEET 3 OF 9
 DATE: 05/03/00 DOCUMENT NO: F1201_3 REV: 5



APPROVED AS COMPLYING WITH THE SOUTH FLORIDA BUILDING CODE
 DATE 08/29/2001
 BY Helmut A. Weber
 PRODUCT CONTROL DIVISION
 BUILDING CODE COMPLIANCE OFFICE
 ACCEPTANCE NO. 00-0929.12



PRODUCT RENEWED as complying with the Florida Building Code
 Acceptance No. 04-0413.04
 Expiration Date 08/29/2009
 By Helmut A. Weber
 Miami Dade Product Control Division

HURRICANE SCREEN ELEVATION
 (OUTSIDE STITCHING DETAILS. THE SCREEN IS MANUFACTURED IN (3) STYLES: VERTICAL SEAM, HORIZONTAL SEAM, & NON-SEALED OVERLAPPED FABRIC PANELS)

NOTE: THERE ARE (19) .052" WIDE FILAMENTS, BOTH HORIZONTALLY & VERTICALLY IN A SQUARE INCH OF AWNING. EACH FILAMENT IS MADE UP OF (3) .013" WIDE SUB FILAMENTS.

PRODUCT REVISED as complying with the Florida Building Code
 Acceptance No. 02-0419.02
 Expiration Date 05/03/2004
 By Helmut A. Weber
 Miami Dade Product Control Division

ROBERT R. BULLARD, P.E. 18544
 ABSOLUTE ENGINEERING GROUP CA-7895
 140 SOUTH BEACH ST. #400
 DAYTONA BEACH, FL 32114
 PHONE: 386-254-2909
 FAX: 386-255-9419

FORCE 12 - MATERIAL SPECIFICATIONS OF SCREEN

FIBER CONTENT	100% POLYPROPYLENE
COLOR	BLACK OR ROYAL BLUE
FINISH	TENTERED & CALENDERED
CONSTRUCTION (APPROXIMATE)	WARP: 60 FILL: 50
WEAVE	3/4" BASKET WEAVE
THICKNESS	20 MILS
WEIGHT, (ASTM D-3776-85)	7.6 OZ/YD ²
ABRASION RESISTANCE (ASTM D-3884)	WARP: 190 LBS FILL: 250 LBS
TENSILE STRENGTH (ASTM D-1682, GRAB METHOD)	WARP: 445 LBS FILL: 375 LBS
TEAR STRENGTH (ASTM D-2261, TRAP METHOD)	WARP: 185 LBS FILL: 190 LBS
BURST STRENGTH (ASTM D-3786 MULLEN)	720 LBS/IN ²
PUNCTURE STRENGTH (ASTM D-3787, MODIFIED)	165 LBS
U.V. RESISTANCE (ASTM G-53, % RETAINED AT 5,000 HOURS)	90%
AIR FLOW	230 CFM

REVISIONS			
BY:	LTR.	DATE	DESCRIPTION
RB	0	3.14.01	ADDITIONAL PERMIT DRAWINGS.
LS	1	4.24.01	REVISED PER CITY REQUIREMENTS
RB	2	6.11.01	REVISED PER NOTES
RRB	4	6.26.01	REMOVE NCTL NOTE
RRB	5	7.19.01	ENLARGE TEXT

AE Hendee Enterprises, Inc.
 The Innovative Solutions Company

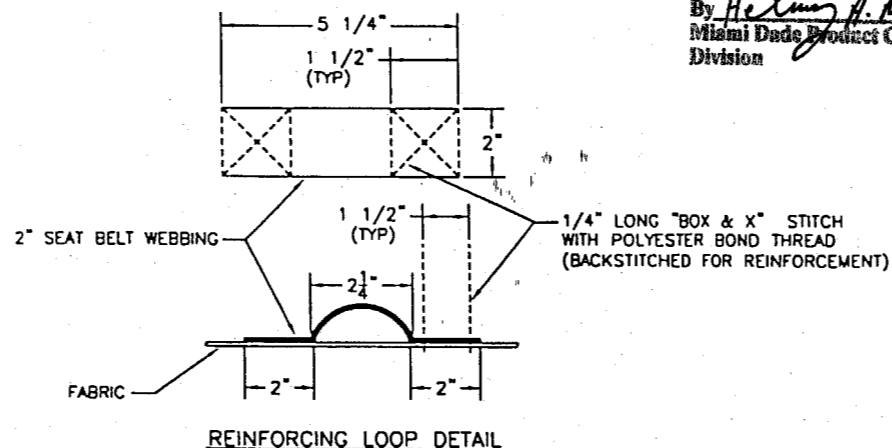
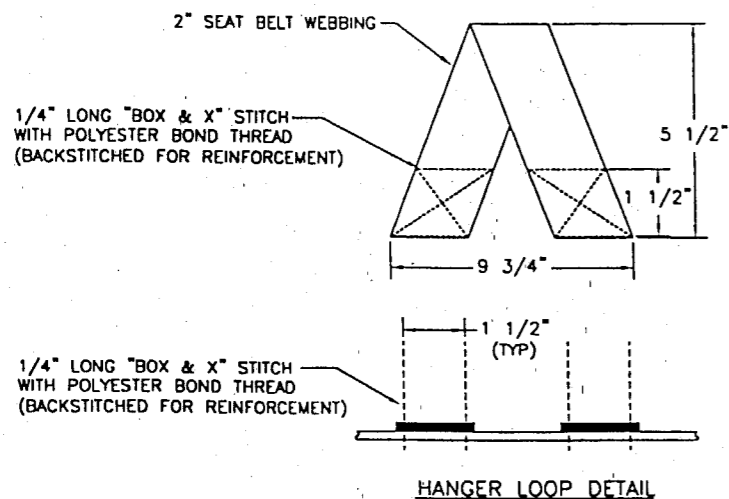
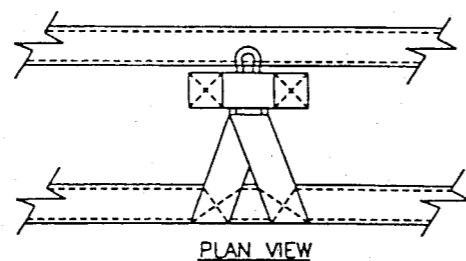
P.O. Box 4289, Houston, TX 77210-4289 9350 South Point Dr., Houston, TX 77054
 (713) 796-2322 Fax (713) 796-0494 (800) 231-7275 (Nat'l) (800) 323-3641 (Texas)

TITLE: FORCE 12
 PANEL MOUNTING CROSS SECTIONS

CLIENT: VARIES
 LOCATION: VARIES

DRAWN BY: RB SCALE: NTS SHEET 4 OF 9
 DATE: 05/03/00 DOCUMENT NO: F1201_4 REV: 5

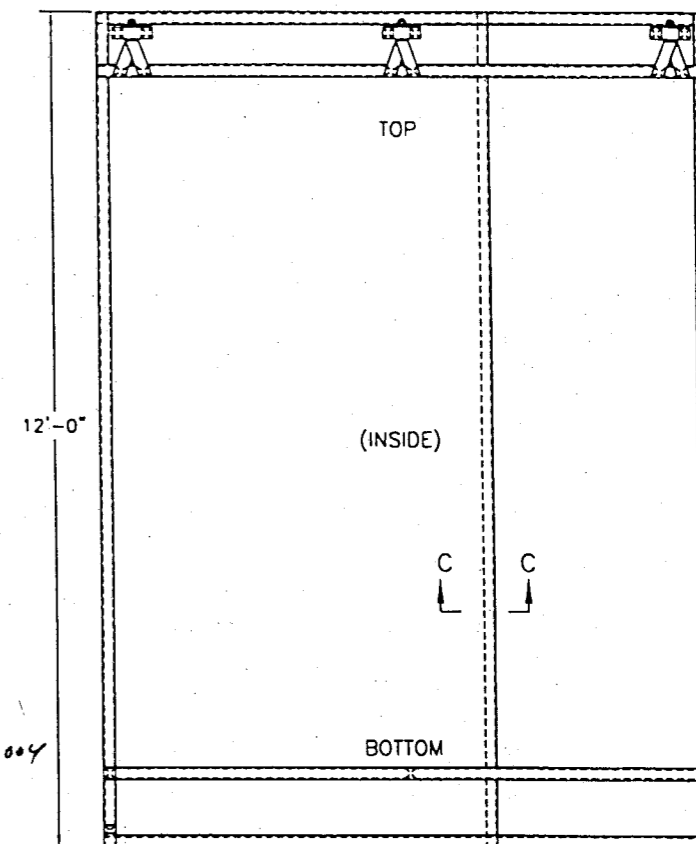
RR Bullard, P.E.
 07/19/01



SCREEN ATTACHMENT LOOP DETAIL AT THE TOP OF SCREEN

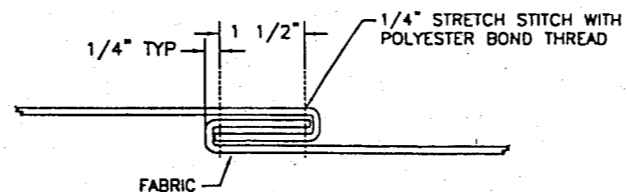
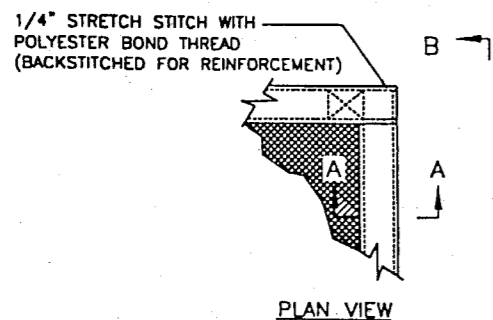
PRODUCT RENEWED
 as complying with the Florida
 Building Code
 Acceptance No 04-0413.04
 Expiration Date 08/29/2009
 By Helmut A. Mader
 Miami Dade Product Control
 Division

PRODUCT REVISED
 as complying with the Florida
 Building Code
 Acceptance No 07-0419.02
 Expiration Date August 29, 2004
 By Helmut A. Mader
 Miami Dade Product Control
 Division



HURRICANE SCREEN ELEVATION

(INSIDE STITCHING DETAILS. THE SCREEN IS MANUFACTURED IN (3) STYLES: VERTICAL SEAM, HORIZONTAL SEAM, & NON-SEAMED OVERLAPPED FABRIC PANELS)

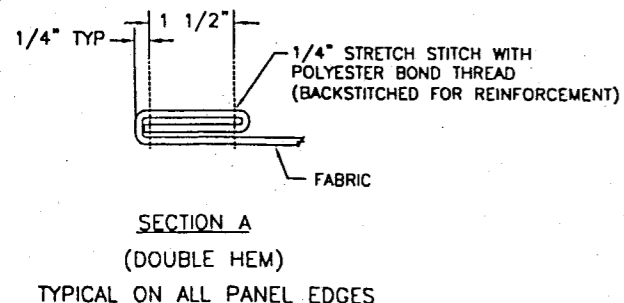


SECTION C
 (HOOK SEAM DETAIL - VERTICAL OR HORIZONTAL)

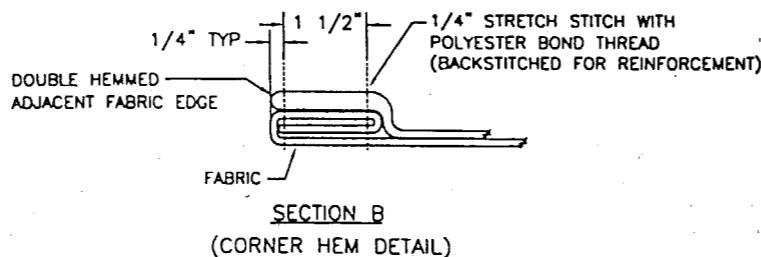
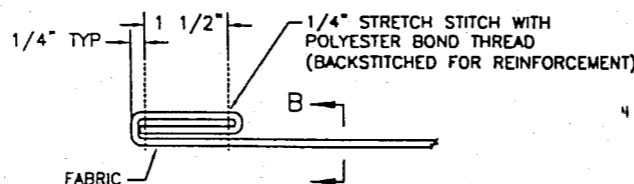
APPROVED AS COMPLYING WITH THE
 SOUTH FLORIDA BUILDING CODE
 DATE 08/29/2001
 BY Helmut A. Mader
 PRODUCT CONTROL DIVISION
 BUILDING CODE COMPLIANCE OFFICE
 ACCEPTANCE NO. 00-0929.12

RR Bullard, P.E.
 07/19/01

ROBERT R. BULLARD, P.E. 18544
 ABSOLUTE ENGINEERING GROUP CA-7895
 140 SOUTH BEACH ST. #400
 DAYTONA BEACH, FL 32114
 PHONE: 386-254-2909
 FAX: 386-255-9419



SECTION A
 (DOUBLE HEM)
 TYPICAL ON ALL PANEL EDGES

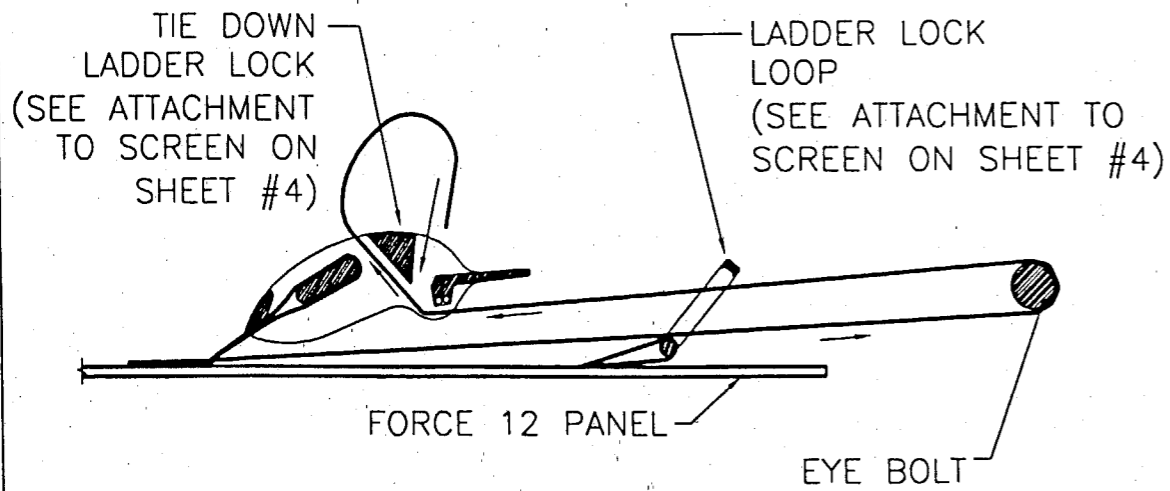


SECTION B
 (CORNER HEM DETAIL)

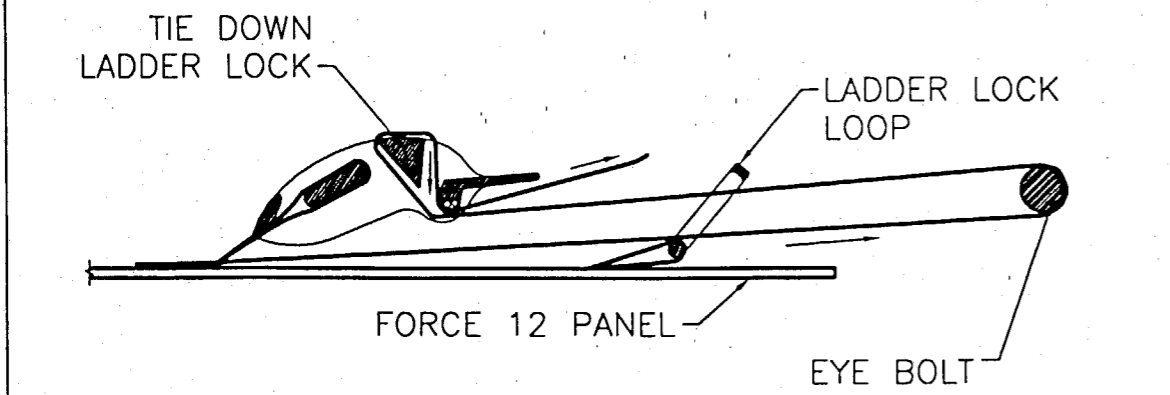
REVISIONS			
BY:	LTR.	DATE	DESCRIPTION
RB	0	3.14.01	ADDITIONAL PERMIT DRAWINGS
LS	1	4.24.01	REVISED PER CITY REQUIREMENTS
RRE	4	06.26.01	REMOVE NCTL NOTE

AE Hendee Enterprises, Inc.
 The Innovative Solutions Company
 P.O. Box 4289, Houston, TX 77210-4289 9350 South Point Dr., Houston, TX 77054
 (713) 796-2322 Fax (713) 796-0494 (800) 231-7275 (No'l'l) (800) 323-3641 (Texas)

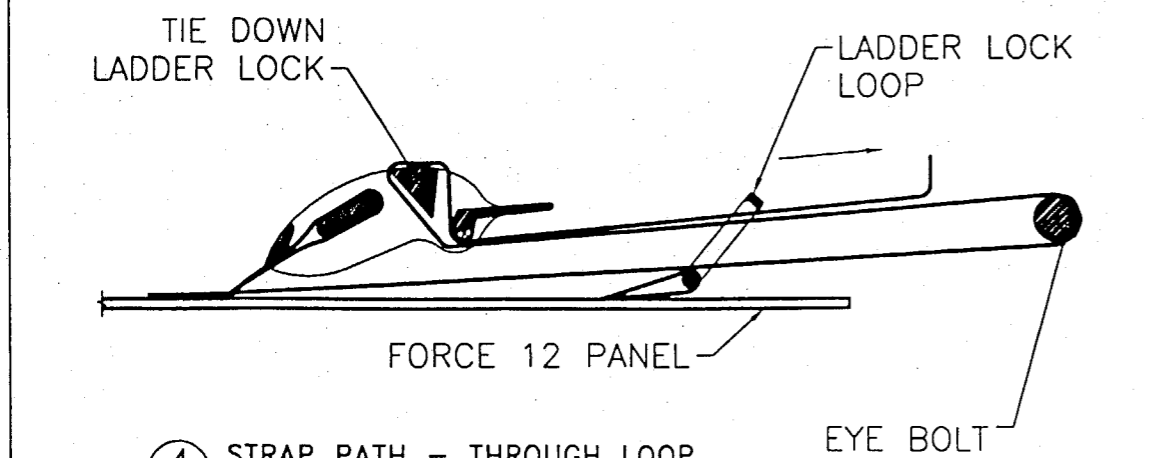
TITLE: FORCE 12
 PANEL MOUNTING CROSS SECTIONS
 CLIENT: VARIES
 LOCATION: VARIES
 DRAWN BY: RB SCALE: NTS SHEET 5 OF 9
 DATE: 05/03/00 DOCUMENT NO: F1201_5 REV: 5



2 STRAP PATH - THROUGH BUCKLE
D1 SCALE: N.T.S. = 1'-0"

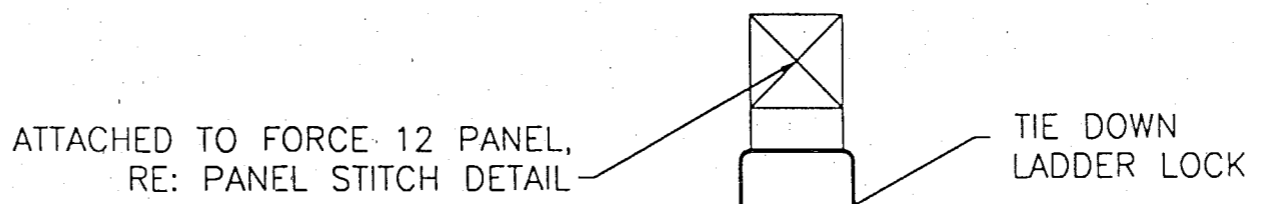


3 STRAP PATH - TIGHTEN
D1 SCALE: N.T.S. = 1'-0"



4 STRAP PATH - THROUGH LOOP
D1 SCALE: N.T.S. = 1'-0"

SCREEN ATTACHMENT STRAP DETAIL
AT THE BOTTOM OF SCREEN



PULL TIGHT THROUGH BUCKLE

1 PANEL ATTACHMENT - STRAP
D1 SCALE: N.T.S. = 1'-0"

PRODUCT RENEWED
as complying with the Florida
Building Code
Acceptance No 04-0413.04
Expiration Date 08/29/2009
By *Helmy A. Miller*
Miami Dade Product Control
Division

PRODUCT REVISED
as complying with the Florida
Building Code
Acceptance No 02-0419.02
Expiration Date August 29, 2004
By *Helmy A. Miller*
Miami Dade Product Control
Division

APPROVED AS COMPLYING WITH THE
SOUTH FLORIDA BUILDING CODE
DATE 08/29/2001
BY *Helmy A. Miller*
PRODUCT CONTROL DIVISION
BUILDING CODE COMPLIANCE OFFICE
ACCEPTANCE NO. 00-0929.12

R. Bullard, P.E.
07/19/01

ROBERT R. BULLARD, P.E. 18544
ABSOLUTE ENGINEERING GROUP CA-7895
140 SOUTH BEACH ST. #400
DAYTONA BEACH, FL 32114
PHONE: 386-254-2909
FAX: 386-255-9419

REVISIONS		
BY: LTR.	DATE	DESCRIPTION
RB 0	3.14.01	ADDITIONAL PERMIT DRAWINGS
LS 1	4.24.01	REVISED PER CITY REQUIREMENTS
RRB 4	6.26.01	REMOVE NCTL NOTE

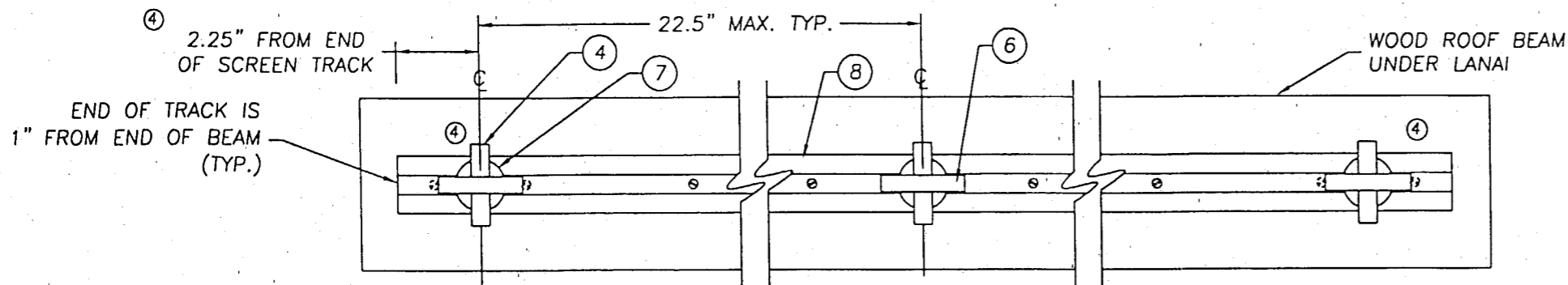
AE Hendee Enterprises, Inc.
The Innovative Solutions Company

P.O. Box 4289, Houston, TX 77210-4289 9350 South Point Dr., Houston, TX 77054
(713) 796-2322 Fax (713) 796-0494 (800) 231-7275 (Nat'l) (800) 323-3641 (Texas)

TITLE: FORCE 12
PANEL MOUNTING CROSS SECTIONS

CLIENT: VARIES
LOCATION: VARIES

DRAWN BY: RB SCALE: NTS SHEET 6 OF 9
DATE: 05/03/00 DOCUMENT NO: F1201_6 REV: 5

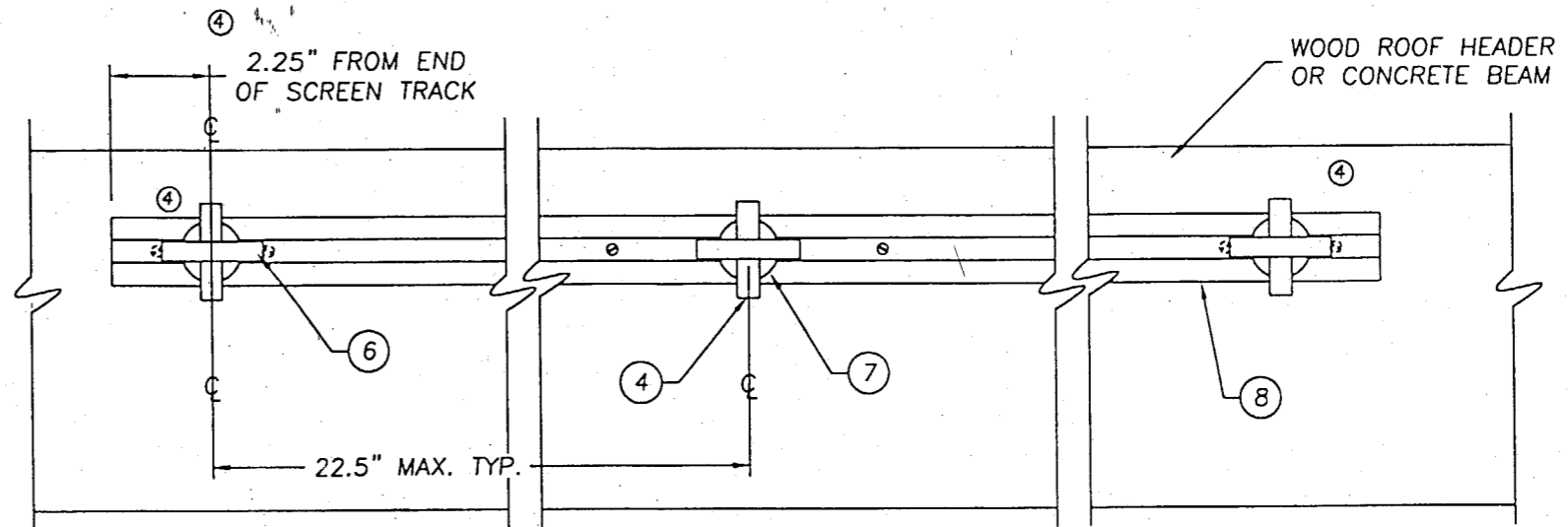


1 PLAN VIEW (LOOKING UP)
7 TOP VERTICAL MOUNTING IN WOOD
SEE SECTION 1/3 SHT. 3 & DETAIL "A" SHEET 8

NOTES:
1. ITEMS #14 & 15 ARE USED WHEN MOUNTING SCREEN BOTTOM TO CONCRETE.

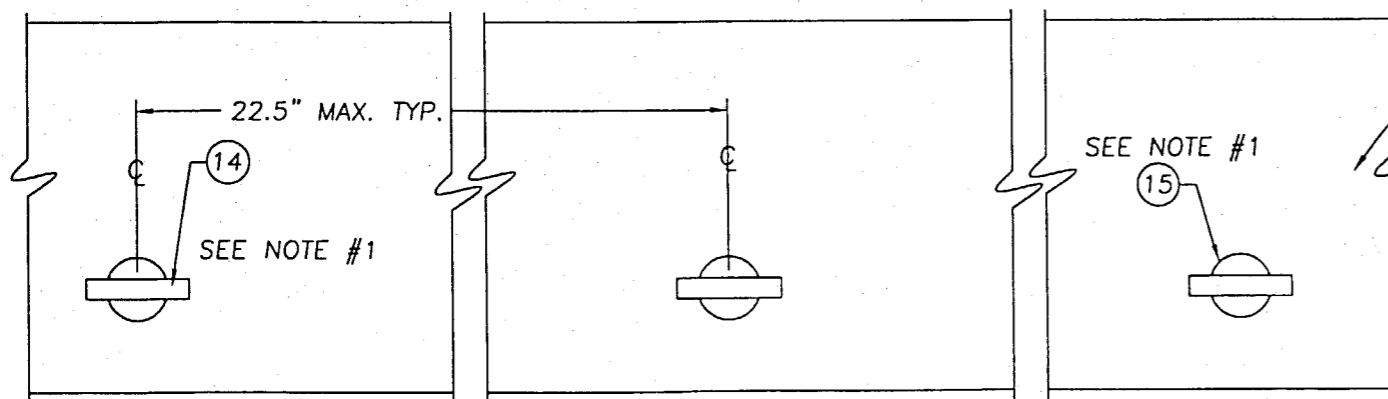
APPROVED AS COMPLYING WITH THE SOUTH FLORIDA BUILDING CODE
DATE 08/29/2001
BY *Helmut A. Huber*
PRODUCT CONTROL DIVISION
BUILDING CODE COMPLIANCE OFFICE
ACCEPTANCE NO. 00-0929.12

PRODUCT RENEWED
as complying with the Florida Building Code
Acceptance No. 04-0413.04
Expiration Date 08/29/2009
By *Helmut A. Huber*
Miami Dade Product Control Division



2 ELEVATION AT
7 TOP ANGLED MOUNTING IN WOOD OR CONCRETE
SEE DETAILS "C" & "D" SHT. 8

*Robert R. Bullard, P.E.
07/19/01*



3 PLAN VIEW AT
7 BOTTOM MOUNTING IN CONCRETE
SEE SECTIONS 1/3, SHT. 3 & 4/2 SHT. 2 & DETAIL "B" SHT. 8

CONCRETE
SEE NOTE #1

PRODUCT REVISED
as complying with the Florida Building Code
Acceptance No. 02-0419.02
Expiration Date August 29, 2004
By *Robert R. Bullard*
Miami Dade Product Control Division

ROBERT R. BULLARD, P.E. 18544
ABSOLUTE ENGINEERING GROUP CA-7895
140 SOUTH BEACH ST. #400
DAYTONA BEACH, FL 32114
PHONE: 386-254-2909
FAX: 386-255-9419

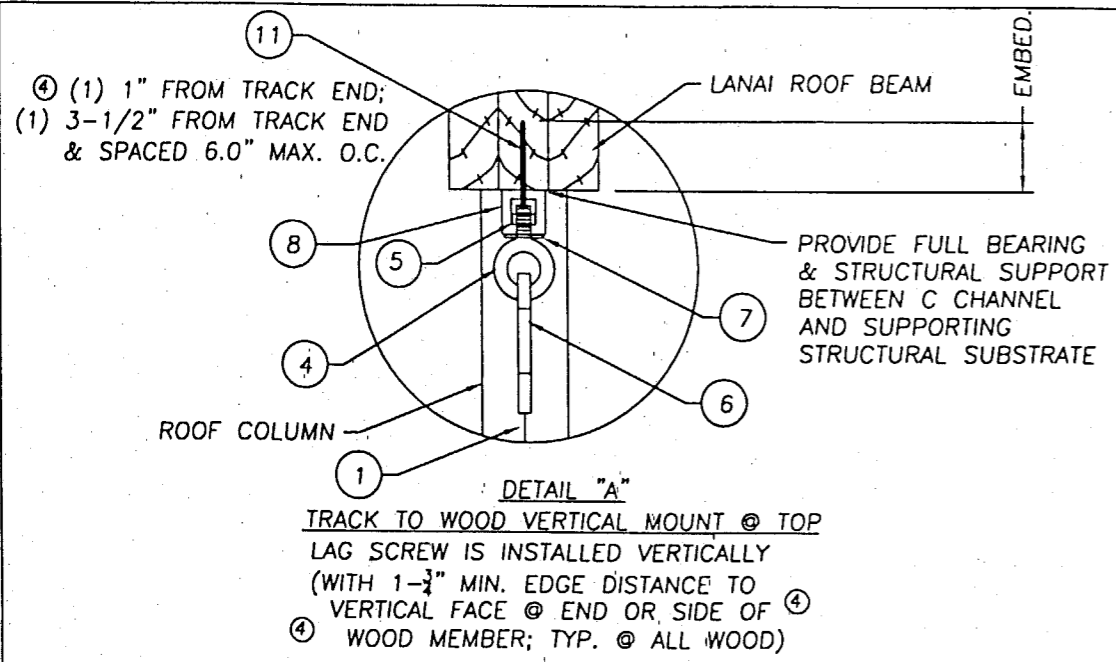
REVISIONS				
BY:	LTR.	DATE	DESCRIPTION	
	LS	1	4/24/01	REV. PER CITY REQUIREMENTS
	RB	2	6/11/01	REVISIONS PER NOTES
	RRB	4	6/26/01	REVISIONS PER NOTES

AE Hendee Enterprises, Inc.
The Innovative Solutions Company
P.O. Box 4289, Houston, TX 77210-4289 9350 South Point Dr., Houston, TX 77054
(713) 796-2322 Fax (713) 796-0494 (800) 231-7275 (Not!) (800) 323-3641 (Texas)

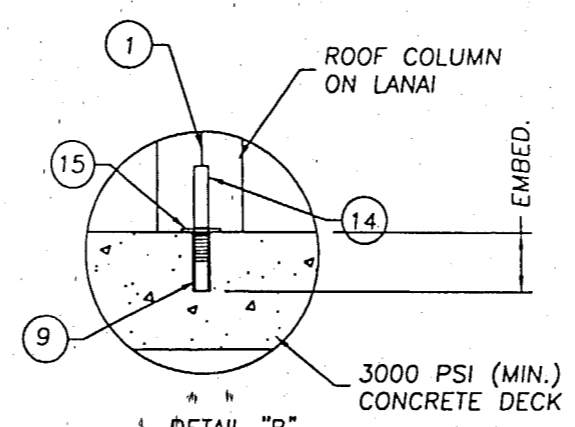
TITLE: FORCE 12
PANEL MOUNTING CROSS SECTIONS

CLIENT: VARIES
LOCATION: VARIES

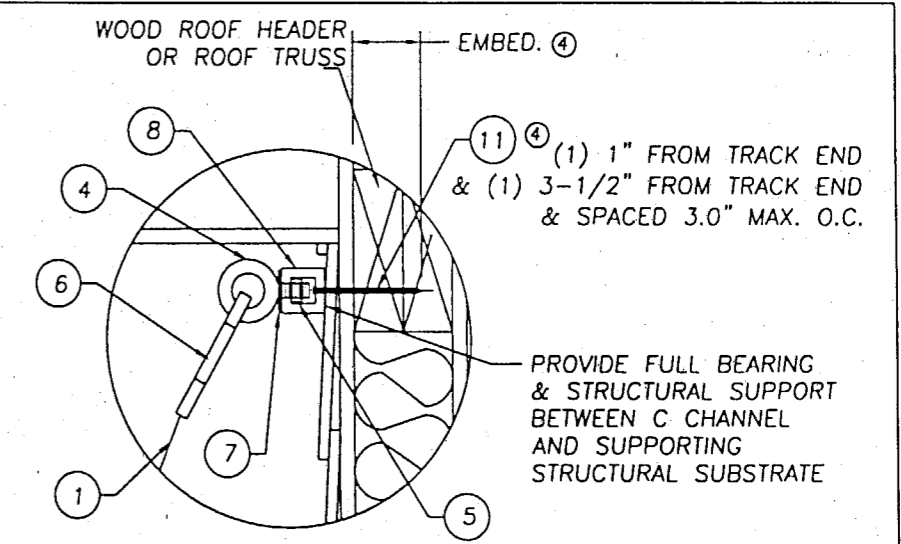
DRAWN BY: RB SCALE: NTS SHEET 7 OF 9
DATE: 05/03/00 DOCUMENT NO: F1201_7 REV: 5



TRACK TO WOOD VERTICAL MOUNT @ TOP
LAG SCREW IS INSTALLED VERTICALLY
(WITH 1-3/4" MIN. EDGE DISTANCE TO
VERTICAL FACE @ END OR SIDE OF
WOOD MEMBER; TYP. @ ALL WOOD)



SCREEN TO CONCRETE @ BOTTOM
DROP-IN ANCHOR IS INSTALLED VERTICALLY
(WITH 7.5" MIN. EDGE DISTANCE, INCL. CRACKS,
OPENINGS AND CONTROL JOINTS)



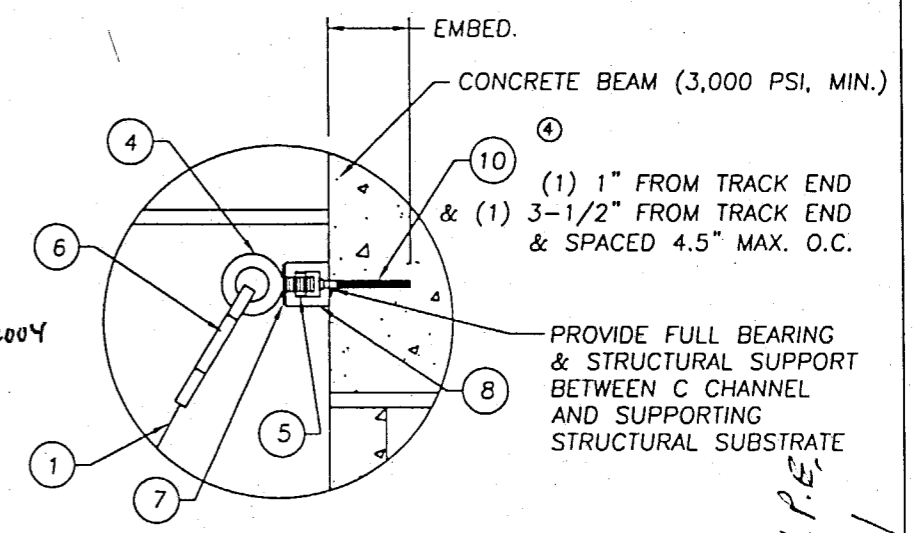
TRACK TO WOOD ANGLED MOUNT @ TOP
LAG SCREW IS INSTALLED HORIZONTALLY
(WITH 3/4" MIN. EDGE DISTANCE)

DETAIL E - NOT USED

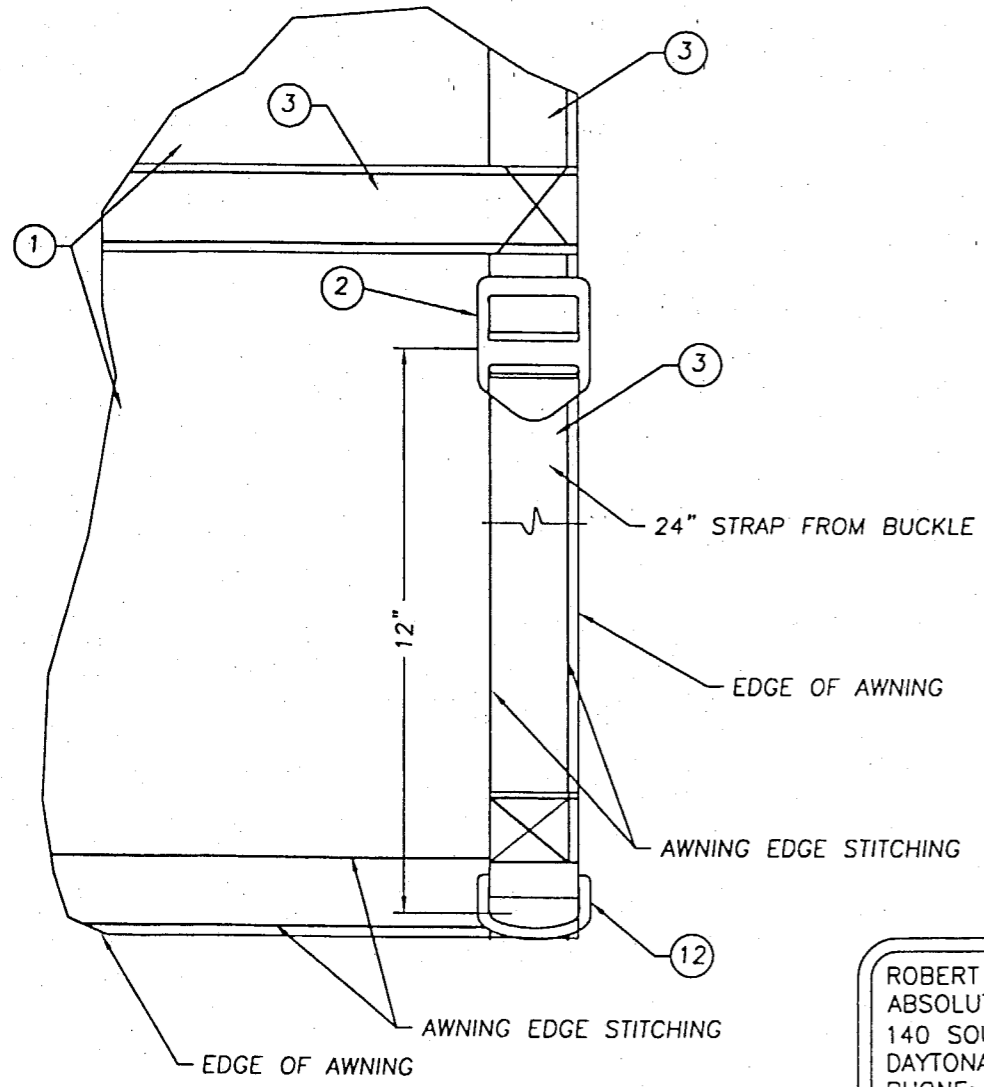
PRODUCT RENEWED
as complying with the Florida
Building Code
Acceptance No. 04-0413.04
Expiration Date 08/29/2009
By *Helmut H. Mader*
Miami Dade Product Control
Division

PRODUCT REVISED
as complying with the Florida
Building Code
Acceptance No. 02-0419.02
Expiration Date 08/29/2004
By *Helmut H. Mader*
Miami Dade Product Control
Division

APPROVED AS COMPLYING WITH THE
SOUTH FLORIDA BUILDING CODE
DATE 08/29/2001
BY *Helmut H. Mader*
PRODUCT CONTROL DIVISION
BUILDING CODE COMPLIANCE OFFICE
ACCEPTANCE NO. 00-0929.12



TRACK TO CONCRETE BEAM ANGLE MOUNT @ TOP
TAP-CON ANCHOR IS INSTALLED
HORIZONTALLY (AS SHOWN) OR
VERTICALLY (WITH 2.5" MIN. EDGE
DISTANCE)



ROBERT R. BULLARD, P.E. 18544
ABSOLUTE ENGINEERING GROUP CA-7895
140 SOUTH BEACH ST. #400
DAYTONA BEACH, FL 32114
PHONE: 386-254-2909
FAX: 386-255-9419

R. Bullard, P.E.
07/19/01

REVISIONS			
BY: LTR.	DATE	DESCRIPTION	
LS	1	4/24/01	REV. PER CITY REQUIREMENTS
RB	2	6/11/01	REVISIONS PER NOTES
RRB	4	6/26/01	REVISIONS PER NOTES

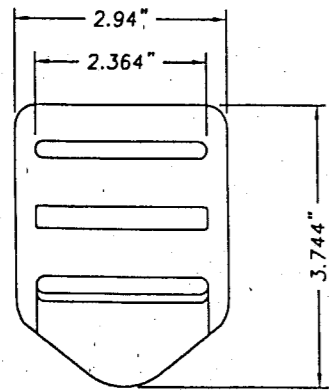
AE Hendee Enterprises, Inc.
The Innovative Solutions Company

P.O. Box 4289, Houston, TX 77210-4289 9350 South Point Dr., Houston, TX 77054
(713) 796-2322 Fax (713) 796-0494 (800) 231-7275 (Not'l) (800) 323-3641 (Texas)

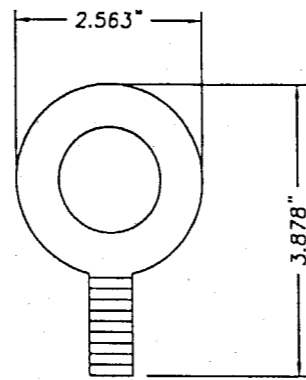
TITLE: FORCE 12
PANEL MOUNTING CROSS SECTIONS

CLIENT: VARIES
LOCATION: VARIES

DRAWN BY: RB SCALE: NTS SHEET 8 OF 9
DATE: 05/03/00 DOCUMENT NO: F1201_8 REV: 5

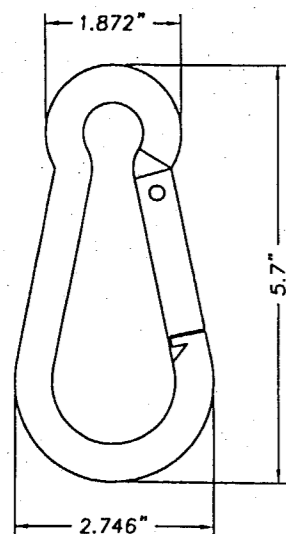


② .22" THK. ACETAL HOSTAFORM C
TIE DOWN LADDERLOC ACETAL HOSTAFORM C

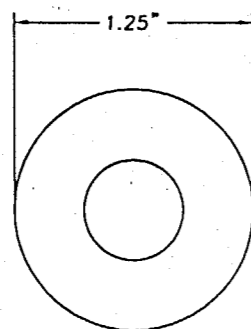


④ 1/2" EYEBOLT
GALVANIZED STEEL 1/2" THK. BAR

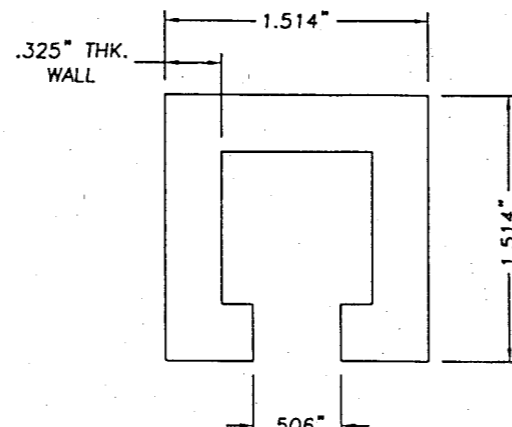
Item	DESCRIPTION	Material
1	HURRICANE SCREEN (SEE SCREEN CONSTRUCTION SHT. 1)	POLYPROP.
2	TIE DOWN LADDERLOC (ITW NEXUS, ACETAL HOSTAFORM C)	ACETAL
3	STRAP	
4	1/2" EYEBOLT (CHICAGO #5)	GALV. STEEL
5	1/2" UNI-STRUT NUT (STAINLESS STEEL, W/OUT SPRING)	S STEEL
6	3/4" SPRING SNAP (CAMMBELL, #B7645068)	S STEEL
7	1/2" FLAT WASHER (.108" THK. STEEL)	STEEL
8	EXTRUDED ALUM. SCREEN TRACK (.325" WALL, 6063-T6)	ALUM.
9	5/8" DROP-IN ANCHOR (BY POWERS RAWL)	S STEEL
10	TAPCON 1/4" x 3 1/4" LG. (ELCO) W/ 1 3/4" (MIN. EMBEDMENT)	STEEL
11	1/4"x3" LG. SLOTTED PANHEAD SCREW (W/ 2" MIN. THREADED EMBED.)	S STEEL
12	LADDERLOC LOOP (ITW NEXUS, ACETAL HOSTAFORM C)	ACETAL
13	LEFT BLANK	-
14	5/8" EYEBOLT (CHICAGO #7)	GALV. STEEL
15	5/8" FLAT WASHER (.108" THK. STEEL)	STEEL



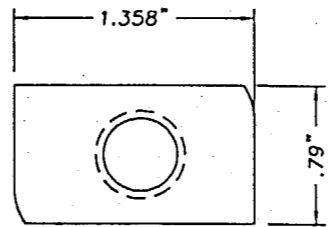
⑥ 3/4" SPRING SNAP
.434" THK. STAINLESS STEEL BAR



⑦ 1/2" FLAT WASHER
.108" THK. STEEL



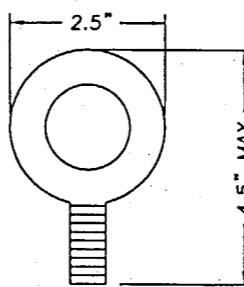
⑧ EXTRUDED ALUMINUM SCREEN TRACK
.325" THK. 6063-T6 ALUMINUM



⑤ 1/2" UNI-STRUT NUT W/OUT SPRING
.364" THK. STAINLESS STEEL

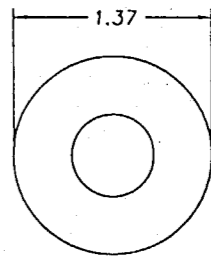
PRODUCT REVISED
as complying with the Florida
Building Code
Acceptance No. 02-0119.02
Expiration Date August 24, 2004
By Miami Dade Product Control
Division

ROBERT R. BULLARD, P.E. 18544
ABSOLUTE ENGINEERING GROUP CA-7895
140 SOUTH BEACH ST. #400
DAYTONA BEACH, FL 32114
PHONE: 386-254-2909
FAX: 386-255-9419



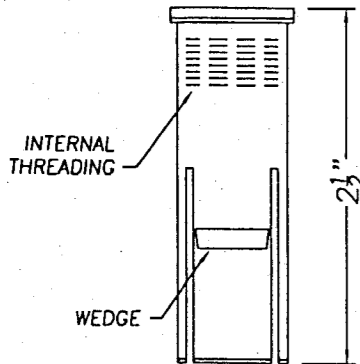
⑭ 5/8" EYEBOLT
GALVANIZED STEEL 5/8" THK. BAR

PRODUCT RENEWED
as complying with the Florida
Building Code
Acceptance No. 04-0413.04
Expiration Date 08/29/2009
By Helms A. Helms
Miami Dade Product Control
Division

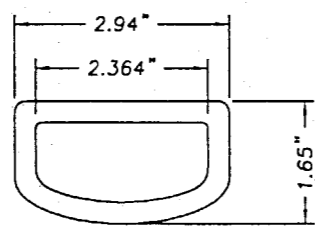


⑮ 5/8" FLAT WASHER
.108" THK. STEEL

RR Bullard, P.E.
07/19/01



⑨ 5/8" DROP-IN ANCHOR
STAINLESS STEEL



⑫ LADDERLOC LOOP
.161" THK. ACETAL HOSTAFORM C

⑬ - NOT USED

APPROVED AS COMPLYING WITH THE
SOUTH FLORIDA BUILDING CODE
DATE 08/29/2001
BY Helms A. Helms
PRODUCT CONTROL DIVISION
BUILDING CODE COMPLIANCE OFFICE
ACCEPTANCE NO. 00-0929.12

PER NCTL-210-2310-1,2,3
(TYPICAL 9 OF 9)

REVISIONS			
BY:	LTR.	DATE	DESCRIPTION
LS	1	4/24/01	REV. PER CITY REQUIREMENTS
RB	2	6/11/01	REVISIONS PER NOTES
RRB	4	6/26/01	REVISIONS PER NOTES

HE Hendee Enterprises, Inc.
The Innovative Solutions Company
P.O. Box 4289, Houston, TX 77210-4289 9350 South Point Dr., Houston, TX 77054
(713) 796-2322 Fax (713) 796-0494 (800) 231-7275 (Not'l) (800) 323-3641 (Texas)

TITLE: FORCE 12
PANEL MOUNTING CROSS SECTIONS
CLIENT: VARIES
LOCATION: VARIES
DRAWN BY: RB SCALE: NTS SHEET 9 OF 9
DATE: 05/03/00 DOCUMENT NO: F1201_9 REV: 5